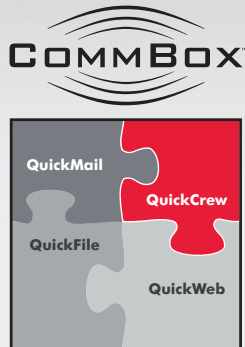


### KVH CommBox – Connecting Ships and Offices Worldwide



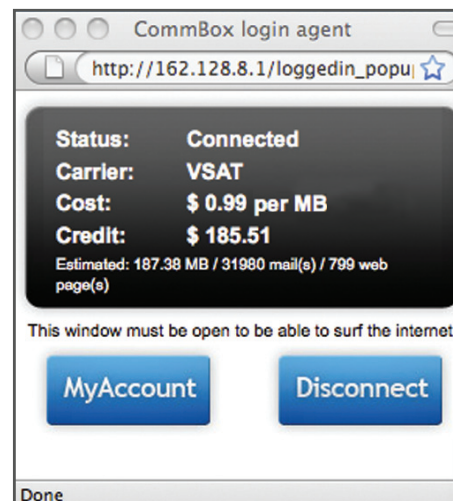
#### Highlights & Features:

- Roaming e-mail accounts follow the crew member from vessel to vessel.
- E-mails are only transferred to the vessel the crew member logs in from.
- E-mail clients can be locked for pre-paid access only, or opened for free usage.
- Pre-paid accounts can be easily refilled with credits used for both e-mail access and web browsing.
- Easy to use interface via web.
- The user has full control of airtime and remaining credits; accounts may be refilled using scratch cards.
- Compatible with the CommBox webmail client, or any POP3/SMTP/IMAP client.
- All usage is logged, and can be retrieved from the system.
- Allows users to immediately begin surfing the web (before account is fetched) if account has sufficient funds/credits.

KVH CommBox QuickCrew is a CommBox software module that makes it easy to give crew members Internet access as well as enable them to stay in contact with family and friends through e-mail wherever they go. QuickCrew's roaming e-mail ensures that crew e-mails are never "lost", by providing each crew member with one personal e-mail account for use on any vessel in the fleet, as well as on shore. The e-mail account will follow the user when he/she embarks on a vessel by a simple login procedure. E-mails to this account will only be transferred to the specific vessel for the duration of the stay. When the crew member logs off, e-mails will be waiting on the CommBox hub until the crew member logs on again during the same passage, from another vessel, or from shore.

#### Pre-paid E-mail and Web Browsing (Internet Café)

The QuickCrew module also includes a pre-paid solution for both e-mail and web browsing. Access to Internet activities is limited to the credit registered to the crew member's account. When the credit reaches \$0.00, e-mail



applications or web browsing are no longer accessible, and the crew member must buy more credits to refill the account. Refills can be managed by the vessel administrator or by creating an activation code that the crew member types in to refill his/her account.

**QuickCrew's status window:**  
Offers an at-a-glance view of login status, active carrier, current carrier's \$/MB, available credit, and more!

When using the pre-paid web browsing function, the user logs on locally to the vessel CommBox. After login, a status window will pop up, showing which carrier is active, and a real-time status of the user's credit balance. The status window must be open for the duration of the browsing session. Closing the status window will terminate the browsing session to ensure the account owner is aware of his/her usage. All IP services will be accessible while the status window is open. QuickCrew makes it easy and affordable for crew to keep in touch with the world around them while strengthening crew morale.

## QuickCrew Interfaced with QuickMail™

Welcome, John Smith. Logged in as: **jsmith**

**Remaining credit :::**

**NOK 96.41**

Estimated: 19.28 MB / 3949 e-mail(s) / 141 web page(s)

**Current status :::**

**Status message** Your account has been received from hub.

**Connection status** Connected.  
Next mail transfer: Manually

**Active** All new mails will be sent to this vessel.

**Unread mail in archive** 0

**Next refill date** Disabled

**Embark date** Tue 10 May. 2011

**Usage summary**

**Total mail usage** NOK 31.04 (6.4 MB)  
sent: 77/ received: 225

**Total web usage** NOK 38.07 (40.52 MB)

**Control panel :::**

**Account details :::**

**Username** jsmith

**Full name** John Smith

**E-mail** jsmith@crew.dev.commbox.com

**Phone** 90168064

**Address**

**Account type** officers (NOK 20.00 / day)

The CommBox QuickCrew module combined with the QuickMail module delivers easy to use pre-paid accounts showing a clear, simple summary of each crew member's personal e-mail account, including available credit, usage, and more.

## CommBox – The Ultimate Ship/Shore Network Manager

Fleets require secure, integrated tools to support operational efficiency, crew morale, regulatory compliance, and safety needs. The fully configurable CommBox Ship/Shore Network Manager is the most complete network management tool available for mariners, offering unmatched solutions for optimization, cost savings, and crew welfare.



[www.kvh.com/commbox](http://www.kvh.com/commbox)



[www.kvh.com](http://www.kvh.com)



**KVH Industries, Inc.**  
World Headquarters  
Middletown, RI U.S.A.  
Tel: +1 401 847 3327 Fax: +1 401 849 0045  
E-mail: [info@kvh.com](mailto:info@kvh.com)

**KVH Industries A/S**  
EMEA Headquarters  
Kokkedal, Denmark  
Tel: +45 45 160 180 Fax: +45 45 160 181  
E-mail: [info@emea.kvh.com](mailto:info@emea.kvh.com)

**KVH Industries Pte Ltd.**  
Asia-Pacific Headquarters  
Singapore  
Tel: +65 6513 0290 Fax: +65 6472 3469  
E-mail: [info@asia.kvh.com](mailto:info@asia.kvh.com)

**KVH Industries Norway AS**  
Regional Office  
Horten, Norway  
Tel: +47 33 03 05 30 Fax: +47 33 03 05 31  
E-mail: [info@no.kvh.com](mailto:info@no.kvh.com)